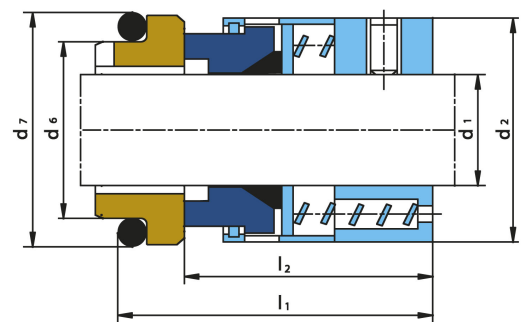
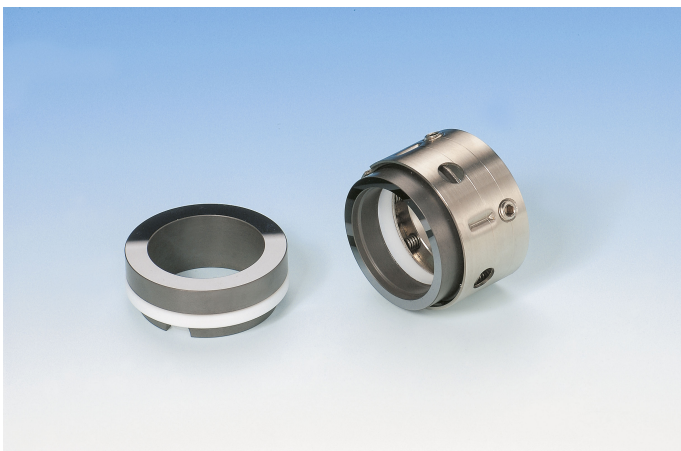


# TARSEAL TA59A and TA58A

DIN 24960

## TA59A



Available also with O-ring TA58A

## MATERIAL ALTERNATIVES

Sliding faces	Flexible parts	Other parts
SiC/SiC Carbon/SiC	Teflon (PTFE) FPM, EPDM, NBR	AISI 316

# TARSEAL TA59A and TA58A

DIN 24960

## DIMENSIONS

Type	d1 h7	d2	d7 h8	d6	l1	l2
TA59A/14	14	24,3	25	21	35,0	23,0
TA59A/16	16	26,3	27	23	35,0	23,0
TA59A/18	18	32,3	33	27	37,5	24,0
TA59A/20	20	34,3	35	29	37,5	24,0
TA59A/22	22	36,3	37	31	37,5	24,0
TA59A/24	24	38,3	39	33	40,0	26,7
TA59A/25	25	39,3	40	34	40,0	27,0
TA59A/28	28	42,3	43	37	42,5	30,0
TA59A/30	30	44,3	45	39	42,5	30,5
TA59A/32	32	46,3	48	42	42,5	30,5
TA59A/33	33	47,3	48	42	42,5	30,5
TA59A/35	35	49,3	50	44	42,5	30,5
TA59A/38	38	54,3	56	49	45,0	32,0
TA59A/40	40	56,3	58	51	45,0	32,0
TA59A/43	43	59,3	61	54	45,0	32,0
TA59A/45	45	61,3	63	56	45,0	32,0
TA59A/48	48	64,3	66	59	45,0	32,0
TA59A/50	50	66,3	70	62	47,5	34,0
TA59A/53	53	69,3	73	65	47,5	34,0
TA59A/55	55	71,3	75	67	47,5	34,0
TA59A/58	58	78,3	78	70	52,5	39,0
TA59A/60	60	80,3	80	72	52,5	39,0
TA59A/63	63	83,3	83	75	52,5	39,0
TA59A/65	65	85,3	85	77	52,5	39,0
TA59A/68	68	88,3	90	81	52,5	39,0
TA59A/70	70	90,3	92	83	60,0	45,5
TA59A/75	75	95,3	97	88	60,0	45,5
TA59A/80	80	104,3	105	95	60,0	45,0
TA59A/85	85	109,3	110	100	60,0	45,0
TA59A/90	90	114,3	115	105	65,0	50,0
TA59A/95	95	119,3	120	110	65,0	50,0
TA59A/100	100	124,3	125	115	65,0	50,0